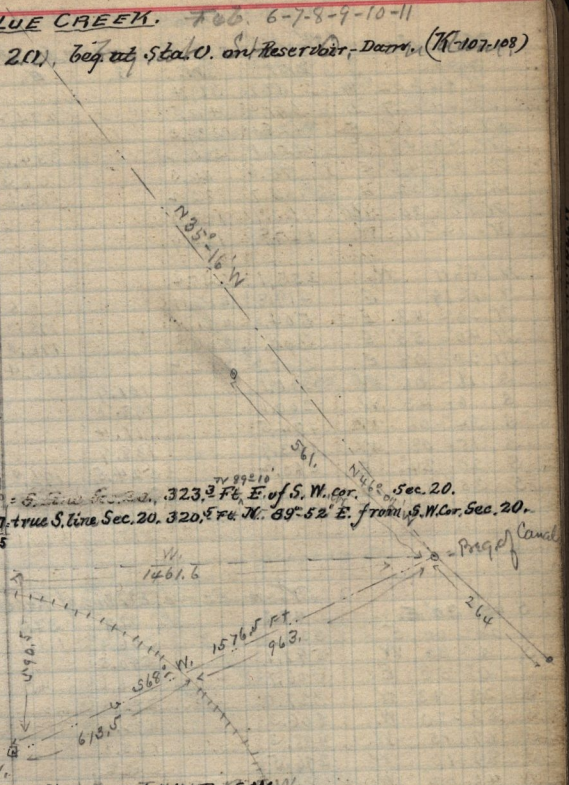


RESERVOIR-SITE AT BLUE CREEK. 700. 6-7-8-9-10-11
 Centers of Centre of Canal in Sec. 20, beg. at Sta. O. on Reservoir, Darr, (T.M. 107-108)

COURSE	DIST.	N.	S.	E.	W.
S 46°-42' W	399.6		273.5		290.3
S 32°-50' E	277.8			277.1	185
S 31°-30' E	301.3			257.1	157.9
S 21°-45' E	145.8			135.4	54
S 47°-30' W	121.2			46.4	112.9
N 45°-07' W	399.6	292.9			283.1
S 71°-43' W	240.5		75.4		228.3
N 82°-41' W	300.6	38.3			298.1
S 45°-16' W	354.4		249.4		257.7
S 10°-22' W	191.2		188.0		34.4
S 3°-32' E	420.3		419.4	25.9	
S 20°-57' E	601.9		562.1	215.4	
N 83°-54' E	404.0	43.0		482.7	
S 78°-32' E	201.8		40.1	197.7	
S 68°-09' E	100.6		37.4	93.9	
S 19°-03' N	98.6		93.2		32.2
S 49°-29' W	197.2		123.1		149.9
S 37°-02' W	312.		249.0		187.9
S 20°-18' W	314.2		294.5		108.9
S 48°-09' W	416.1		298.7		290.0
S 34°-35' W	4.8		4.0		
5803.7	363.3	3628.9	116.1	2219.5	



Centers of
 Centers of centre of Canal in Secs. 29 & 30. T. N. W. - R. S. W. W.

DIST.	N.	S.	E.	W.	Notes
S 34°-35' W	564.7		464.9	320.5	= E. line of Sec. 30. 464.2 ft. S. of N.E. Cor., 30.
S 34°-35' W	126.8		104.1	71.8	
S 17°-42' W	446.5		425.3	135.7	
S 31°-14' W	815.2		700.0	424.2	
S 2°-20' E	754.0		746.0		
S 19°-43' W	921.1		890.9		
N 89°-20' W	301.0	3.5		234.0	
S 7°-26' W	356.6		191.9	301.0	
S 22°-20' W	739.8		684.8	300.5	
S 33°-26' W	196.3		163.8	291.1	
S 46°-16' W	500.0		553.0	108.1	
S 49°-23' W	259.2		165.7	578.0	
304.9		198.5		231.4	= S. line Sec. 30, 2753.4 Ft. 589.51' W. from S.E. Cor. of Sec. 30. (by calculation.)
6588.4	3.5	5291.4	109.2	3183.0	S. line of Sec. 30 is 5286.5 Ft. long by the official survey.

total length of Canal = 12392.5 Ft
 surrounding Reservoir 9792.7 Ft